

Case Study 13: Corrosion within Sludge

Deposits, such as sludge, can often be found in sporadic positions along pipelines, resulting in accelerated localised corrosion promoted by different mechanisms, like microbiologically-influenced corrosion (MIC).

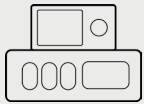
Job Details

- 8" High Pressure Gas line
- Painted surface

Main Findings

- Clear indication of severe internal corrosion in the GWT data
- Extra attenuation is caused by the sludge inside the pipe
- RT result confirms clusters of deep pits located at the bottom of the pipe

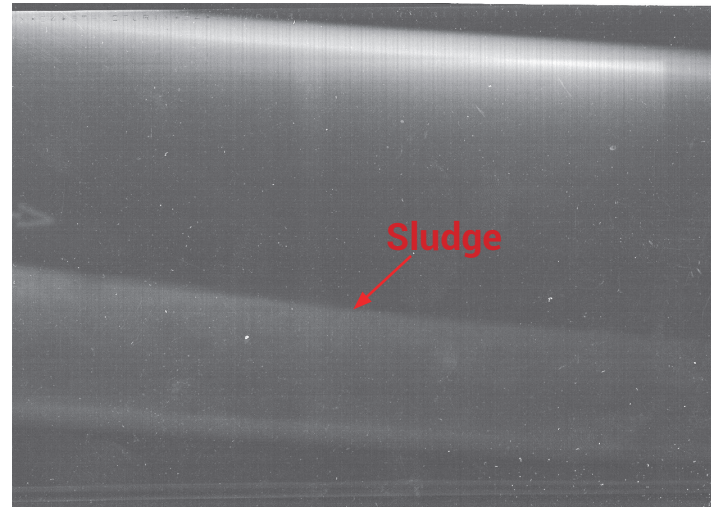
Equipment:



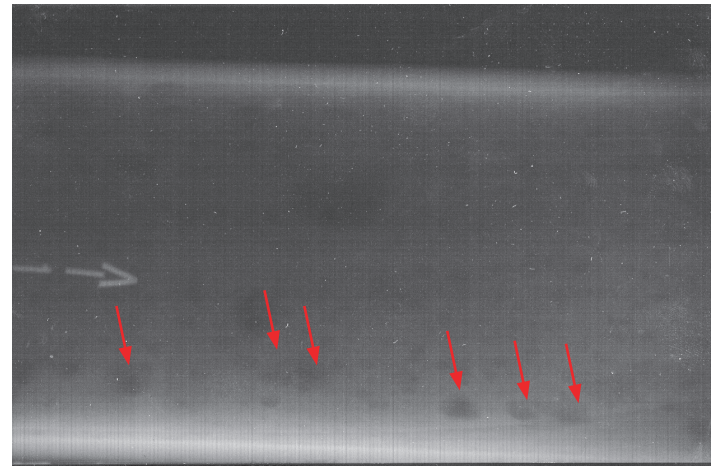
Wavemaker® G4



EFC Inflatable Ring



The side view of the RT result at the corresponding severe defect location.



The top view of the RT result at the severe defect location which reveals clusters of deep pits.

